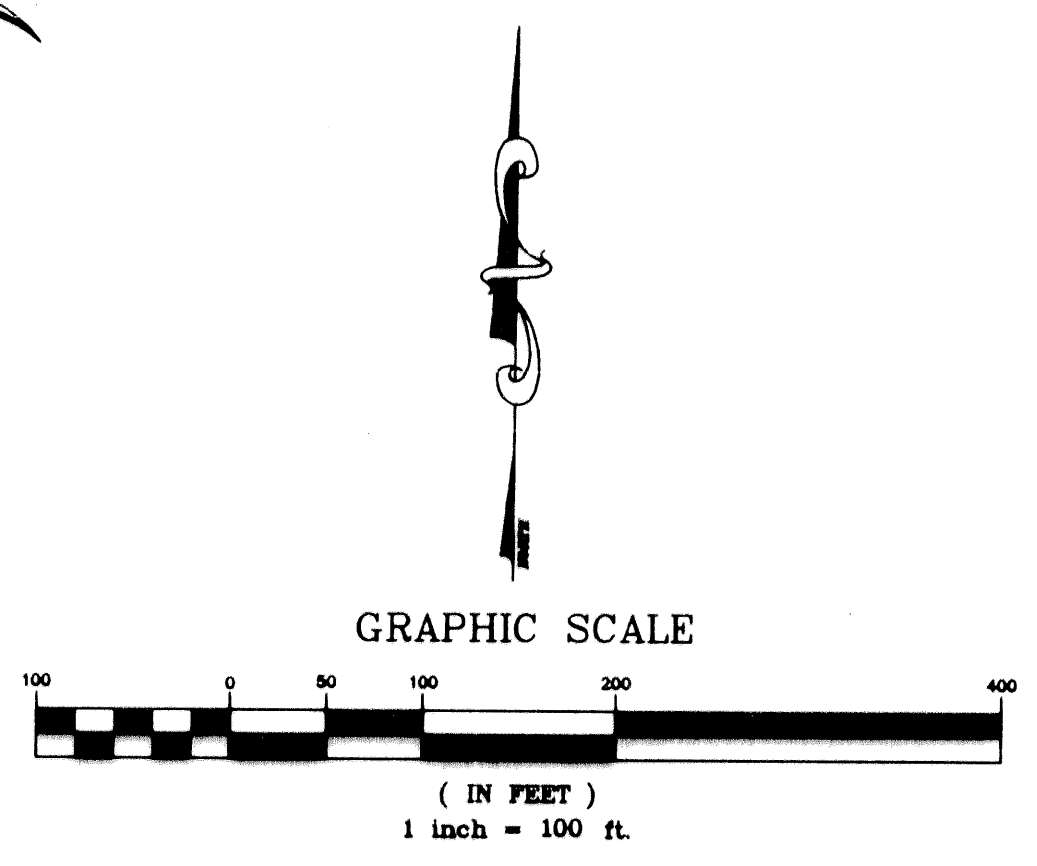


# IBIS GOLF AND COUNTRY CLUB PLAT NO. 14

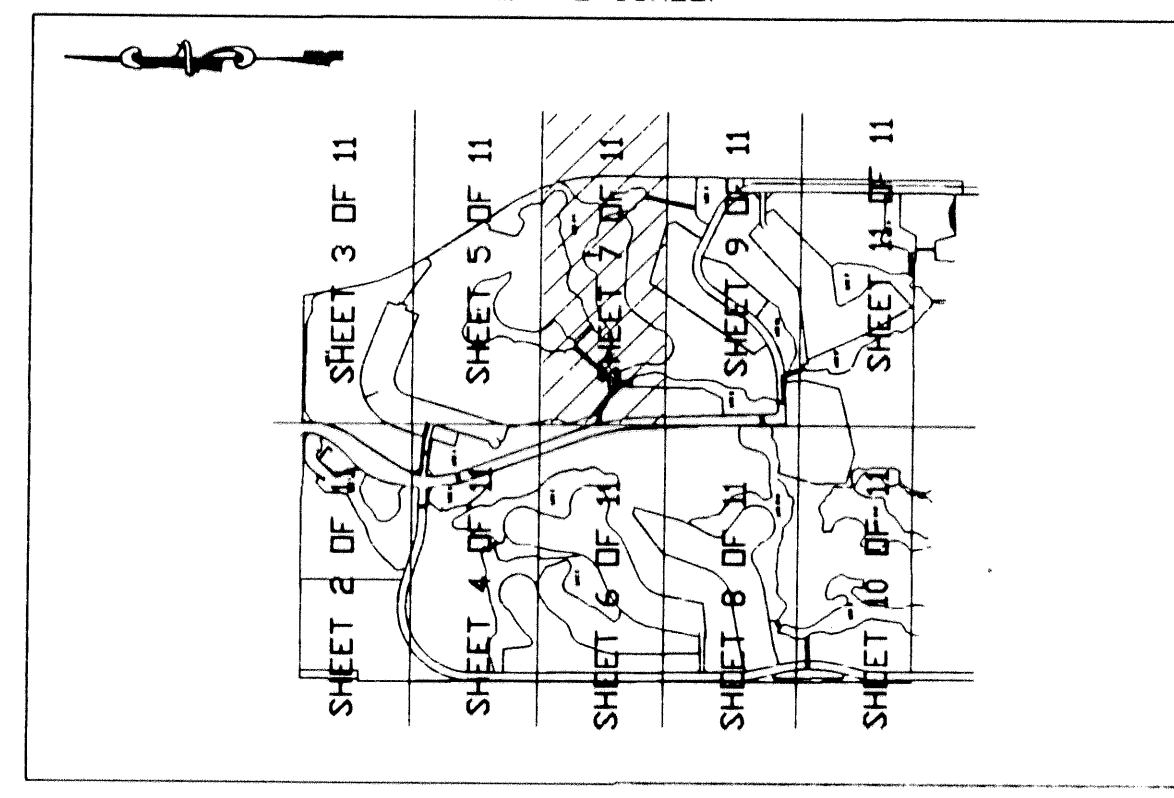
A PLAT OF  
A PLANNED UNIT DEVELOPMENT  
LYING IN SECTIONS 13, 24 AND 25, TOWNSHIP 42 SOUTH, RANGE 41 EAST  
CITY OF WEST PALM BEACH, PALM BEACH COUNTY, FLORIDA

# 113

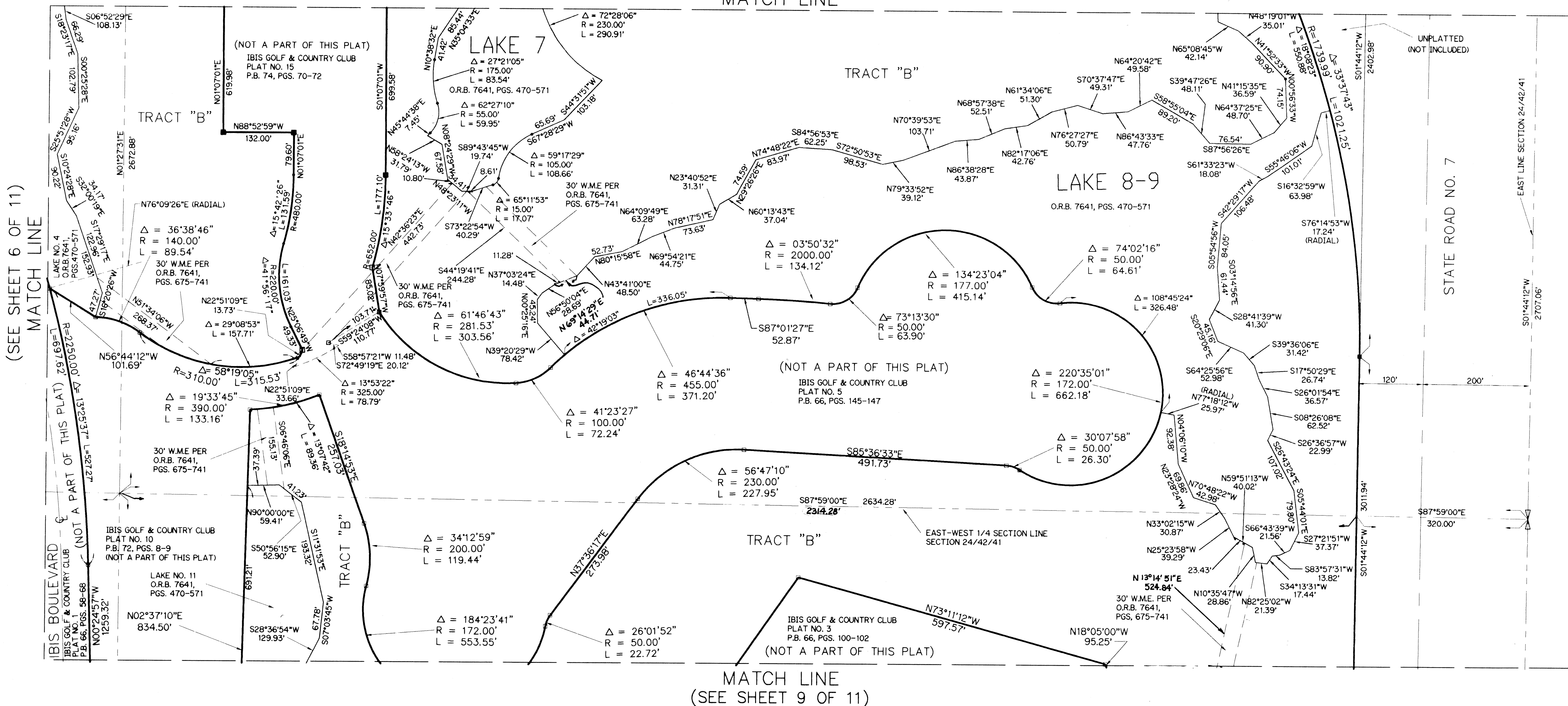


- LEGEND:  
 O.R.B. - OFFICIAL RECORD BOOK  
 P.B. - PLAT BOOK  
 PGS. - PAGES  
 W.M.E. - WATER MANAGEMENT EASEMENT  
 □ - PERMANENT REFERENCE MONUMENT FOUND NO. LB 959  
 ■ - PERMANENT REFERENCE MONUMENT SET NO. LS 4382  
 ⊕ - SECTION CORNER  
 ⊕ - ONE-QUARTER SECTION CORNER

KEY MAP  
(NOT TO SCALE)



(SEE SHEET 5 OF 11)  
MATCH LINE



(SEE SHEET 6 OF 11)  
MATCH LINE

SUBDIVISION # Ibis Golf And Country Club Plat No. 14  
 BOOK 75 FLOOD ZONE FLOOD MAP # ZONING # ZIP CODE  
 QUAD # SE # PUD NAME C/West Palm Beach  
 13, 24, 25, 42/41

**lfp** LINDAHL, BROWNING, FERRARI, & HELLSTROM, INC.  
 CONSULTING ENGINEERS, PLANNERS & SURVEYORS  
 210 JUPITER LAKES BLVD. 2400 S.E. MONTEREY ROAD 2222 COLONIAL ROAD 2000 PALM BEACH LAKES BLVD.  
 BLDG. 5000, SUITE 104 SUITE 300 SUITE 201 SUITE 702  
 JUPITER, FL 33468 FT. PIERCE, FL 34969 FT. PIERCE, FL 34950 WEST PALM BEACH, FL 33409  
 407-746-9248 407-286-3883 407-461-2450 407-684-3375